



**DUO-TYNE Flag Connectors**

**Product Facts**

- Right angle design permits cabling in close quarters
- Recessed contacts help prevent arcing
- Sizes and configurations available with or without mounting ears
- Lowest installed costs achieved through high-speed compression crimping with AMP matched tooling
- Meets quality and reliability requirements for appliance controls, vending machine subassemblies and business machines
- Recognized under the Component Program of Underwriters Laboratories Inc. File No. E28476 
- Certified by Canadian Standards Association File No. LR 7189 



This flag-type connector is designed to meet the quality and reliability of such equipment as appliance controls, vending machine subassemblies, television, stereo, business machines and other applications with similar control needs.

Among its assembly-saving features is a right-angle design which permits cabling in close quarters, where it does not require frame mounting to attach

the keyed housing to the card cutout and double locking of the contacts when a PC board is inserted. In addition, contacts are recessed to prevent arcing. All sizes and configurations are available with or without mounting ears. Added to low initial cost, lowest installed costs are achieved through high-speed compression crimping with Tyco Electronics matched tooling.

**Performance Specifications**

**Contact Rating\*:**  
5 amperes

**High Potential:**  
2200 VAC, rms

**Operating Temperature:**  
-40°C to +105°C

**Vibration:**  
10 to 55 cps per MIL-STD-1344, Method 202

\*Consult Tyco Electronics engineering when paralleling contacts for power applications.

**DUO-TYNE Flag Connectors** (Continued)

**Tapered Beam Crimp, Snap-In Contacts**

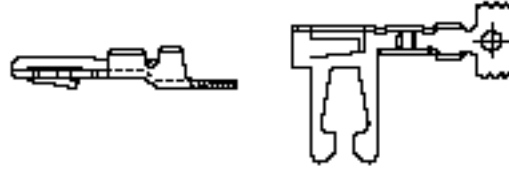
**Material and Finish:**

Beryllium copper or phosphor bronze (see chart) plated as follows:

**Plating A**—.000030 [0.00076] gold in mating area, with entire contact under-plated .000050 [0.00127] nickel

**Plating B**—.000015 [0.00127] gold in mating area, with entire contact under-plated .000050 [0.00127] nickel

**Plating C**—.000150 [0.00381] tin



**Related Product Data:**

**Performance Specifications**—page 177

**Connector Housings**—page 179

**Application Tooling**—pages 184, 185

**Technical Documents:**

(pages 186, 187):

Product Specification 108-9038

Application Specification 114-9002

Instruction Sheets 408-7047, 408-7780, 408-7848, 408-7849

Wire Size Range		Insulation Dia. Range	Material	Contact Finish (Plating)	Contact Part Numbers		Applicator for AMP-O-LECTRIC Machine*	Hand Tool
AWG	mm <sup>2</sup>				Loose Piece	Strip Form		
26-22	0.12-0.4	.035-.055 0.89-1.40	Beryllium Copper	A	530005-3	530004-6	466586-2	90094-4
				B	—	530004-7		
				B	—	530002-7		
22-18	0.3-0.9	.060-.090 1.52-2.29	Phosphor Bronze	C	—	530002-5	466424-2	90027-4
				A	—	530002-3		
				C	—	530006-5		
18-16	0.8-1.4	.090-.130 2.29-3.30	Beryllium Copper	A	—	530006-6	466413-2	—
				B	530007-3	—		
				C	—	530006-2		
18-16	0.8-1.4	.090-.130 2.29-3.30	Phosphor Bronze	C	—	530505-5	466413-2	—

\*Applicators are for AMP-O-LECTRIC Model "K" machines. Consult Tyco Electronics for applicators for other bench machines and lead-making machines.

Hand Crimping Tool



Contact Extraction Tool 810992-1



**DUO-TYNE Flag Connectors** (Continued)

**Housings, With and Without Mounting Ears**

**Material:** Natural nylon

**Related Product Data:**

**Performance Specifications**—page 177

**Contacts**—page 178

**PC Board Layout**—page 181

**Technical Documents:**

(pages 186, 187):

Product Specification 108-9038

Application Specification 114-9002

Instruction Sheet 408-7047

**On-Contact Keying Plug**

**Material:** Nylon

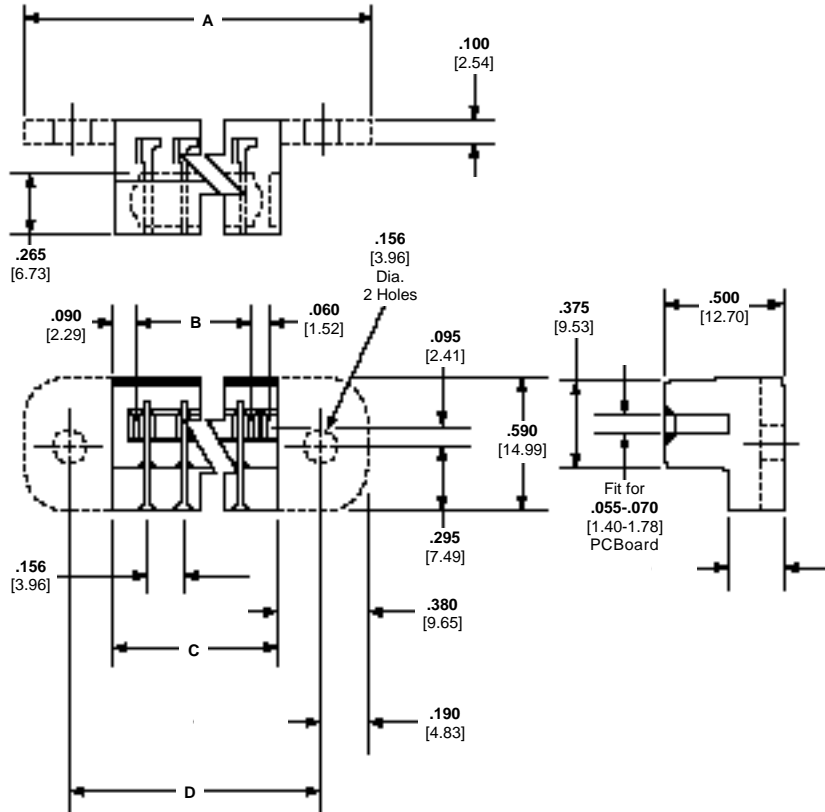


**Part Number 583661-1**

**Technical Documents:**

(pages 186, 187):

Instruction Sheet 408-7486



No. of Pos.	Dimensions				Part Numbers			
					With Mounting Ears		Without Mounting Ears	
	A	B	C	D	For Ins. Dia. Range	For Ins. Dia. Range	For Ins. Dia. Range	For Ins. Dia. Range
3	1.384 35.15	.414 10.52	.624 15.85	1.004 25.50	582380-9	—	—	—
5	—	.736 22.40	.936 27.74	—	—	—	582370-9	530853-2
6	1.852 47.04	.882 22.40	1.092 27.74	1.472 37.39	582382-9	530509-1	582371-9	530853-3
9	2.320 58.93	1.350 34.29	1.560 39.62	1.940 49.28	582383-9	530509-2	582375-9	—
12	2.788 70.82	1.818 46.18	2.028 51.51	2.408 61.16	582384-9	530509-6	582376-9	530853-5
14	3.100 78.74	2.130 54.10	2.340 59.44	2.720 69.09	582385-9	530509-7	582372-9	530853-6
15	3.256 82.70	2.286 58.06	2.496 63.40	2.876 73.05	582386-9	530509-3	582377-9	—
18	3.724 94.59	2.754 69.95	2.964 75.29	3.344 84.94	582387-9	530509-8	582378-9	530853-8
22	4.348 110.44	3.378 85.80	3.588 91.14	3.968 100.79	582388-9	530509-9	582379-9	—

**Note:** Other connector sizes can be made available, consult Tyco Electronics.

**DUO-TYNE Flag Connectors** (Continued)

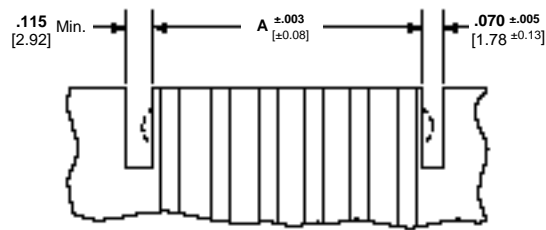
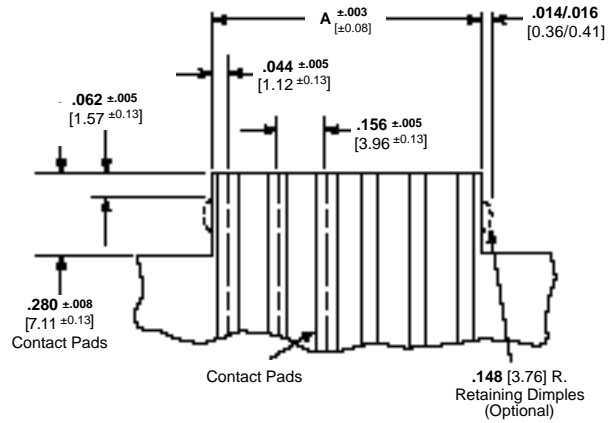
**Recommended PC Board Layouts**

**Related PC Board Data:**

**Recommended Board Thickness**—  
.055-.070 [1.40-1.78]

**Recommended Chamfer of Mating Edge of Boards**—.015 [0.38] x 45°

**Recommended Pad Plating**—Tin  
.000150-.000400 [0.00381-0.01016]  
thick



No. of Positions	Dimension A
3	.400 10.16
5	.712 18.09
6	.868 22.05
9	1.337 33.96
12	1.805 45.85
14	2.117 53.77
15	2.272 57.71
18	2.741 69.62
22	3.365 85.47